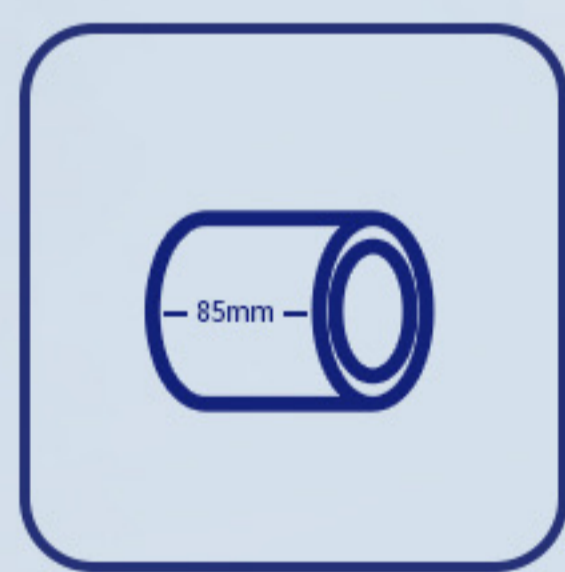


R3/R3 PLUS

1500-4000W

Economical Tube Laser Cutting Machine



Cut with Short Tailing



HSG-X Bus-based Control System

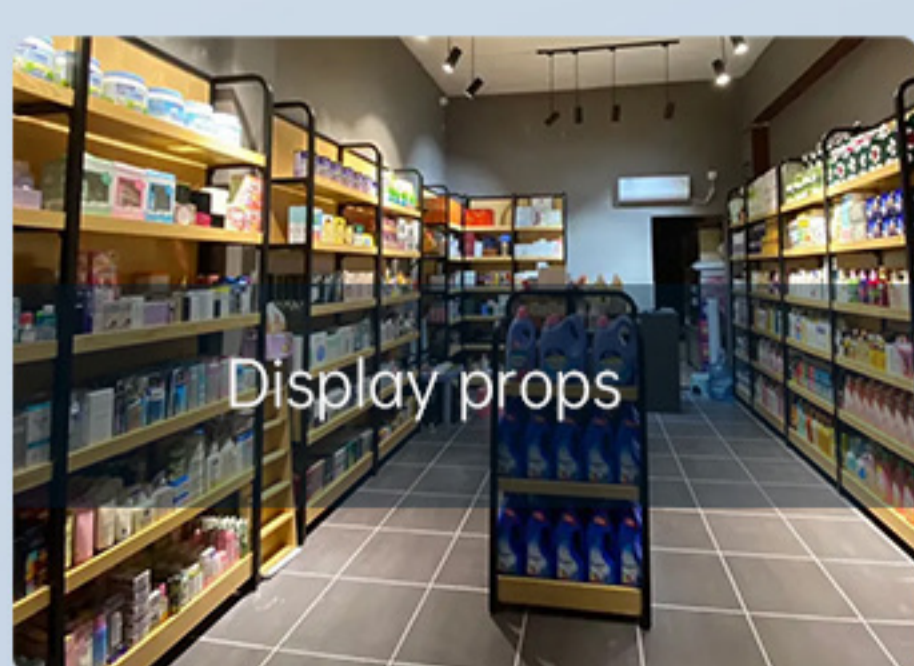


DIN6 Transmission Precision



40HQ Standard Container Transport

► Applicable Industry



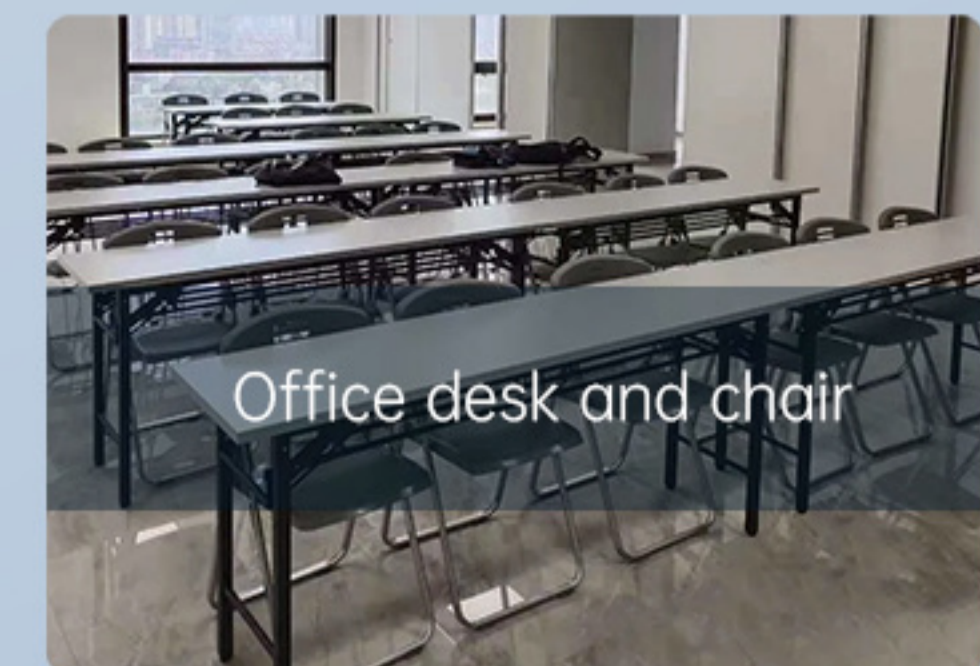
Display props



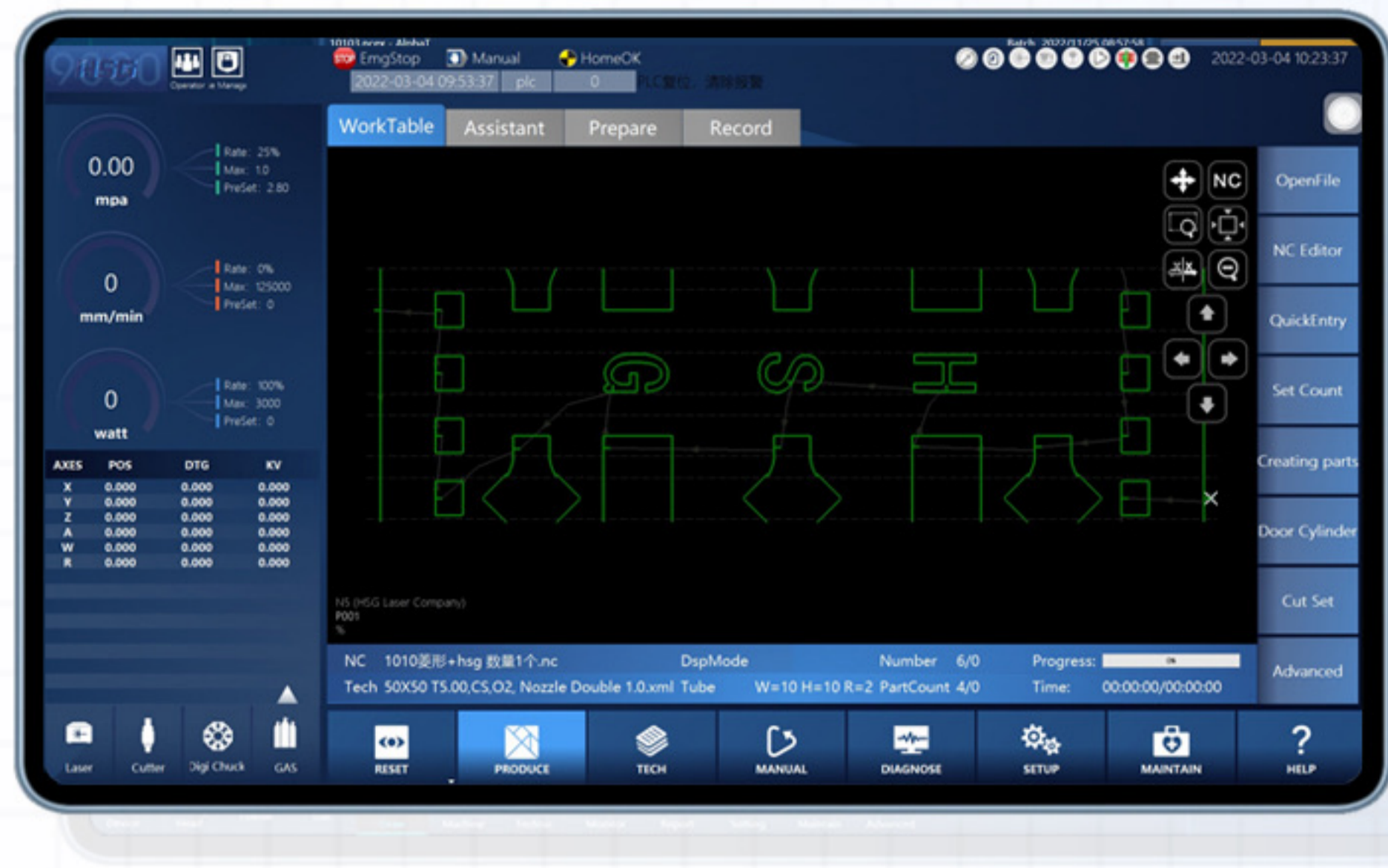
Medical device



Metal furniture



Office desk and chair



HSG-X Bus-based Control System

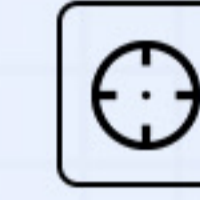
HSG-X control system is bus-based and self-developed by HSG Laser. With intelligent and easy-to-operate service, it can offer users effective solutions to address problems of difficult operation, low efficiency and high costs.



21.5-inch touch screen with concise interface



Monitor core components in real time and give early alarm



Detect tube deviation if needed



Click to create processing report

Cut with Short Tailing

Due to front chuck avoidance cutting, its tailing is only 85mm and material utilization is greatly improved.



40HQ Standard Container Transport

The machine is shipped in a 40HQ standard container, saving overseas freight for customers.

► Technical parameter

Model	R3	R3 PLUS
Power		1500-4000W
X/Y-axis positioning accuracy		±0.05mm/m
X/Y-axis repositioning accuracy		±0.03mm
Rotating speed of chucks		90r/min
No-load speed		90m/min
Round tube	Φ20-219mm	Φ20-325mm
Square tube	20*20-150*150mm	□20*20-230*230mm
Weight of single tube	150kg	200kg

*The product appearance, parameters, performance description and comparison data displayed on this page/video/picture are all from the internal laboratory of HSG Laser Factory. The testing and testing of the company's own products are for reference only, and the data provided by the sales staff shall prevail.