



FIBER LASER WELDING MACHINE TECHNICAL SOLUTION

MFG. OF LASER CUTTING , MARKING, ENGRAVING , WELDING MACHINES



ONE-STOP SOLUTION



QUALITY CONTROL



24 HOURS AFTER SALE



BESTSELLER WORLD

PROFESSIONAL LASER INDUSTRY SOLUTIONS PROVIDER
www.xtlaser.com Email: manager@xtlaser.com Tel: +86 531 8855 8038

XTW-1000/1500/2000/3000



Quick Details

- ✓ Handheld model
- ✓ Raycus/Max/Reci laser source
- ✓ Cable length: 8m
- ✓ Laser head:0.9KG
- ✓ 4-in-1:welding/cleaning/cutting/
weld seams cleaning

Technical Items and Parameters

No.	Model	XTW-1000	XTW-1500	XTW-2000	XTW-3000
I.Laser source		Raycus/Max/Reci	Raycus/Max/Reci	Raycus/Max/Reci	Raycus/Max/Reci
1.	Output Power (w)	1000w	1500w	2000w	3000w
2.	Center wavelength	1080nm ±5			
3.	Fiber Cable length	8m			
II. Water Cooling		Built-in	Built-in	Built-in	Built-in/Outside
III. Laser head					
1	Spot size (mm)	0.5-5mm (0-8mmcustomized)			
2	Working Mode	—			
3	Cleaning width	30mm/70mm/120mm (With welding head focus lens)(F 150-0~30mm) F 400-0~70mm F 800-0~120mm			
4	Cutting thickness	Up to 2-3mm			
V.Total Power Consumption		5.5KW	7KW	9.5KW	13.3kw
VI.Voltage		220 1ph 50/60Hz		220V 1ph; 380V 3ph	380 1ph 50/60Hz
VII.package size (mm)(LxWxH)		1.5kw 2kw:127x76x105cm 167kg; 70x35x63cm 50kg(1-wire feeder) 3kw:126x76x133cm 220kg; 70x35x63cm 50kg(1-wire feeder); 70x46x99cm 50kg(2-wire feeder)			

Welding ability(For reference only)

No.	Material	Max welding dept			
		1kw	1.5kw	2kw	3kw
1	Stainless steel	≤2mm	≤3mm	≤5mm	≤8mm
2	Mild steel/Iron	≤3mm	≤4mm	≤6mm	≤9mm
3	Aluminum/brass	≤2mm	≤3mm	≤4mm	≤6mm

Machine Details

<https://youtu.be/8cMpEow0j0k>

https://youtu.be/k5-2_tfbArY

https://youtu.be/LV9C4pCf_MM



Laser Source

Fiber laser source:Raycu/Max/Reci brand, from China.

Single module CW Fiber Lasers with laser power.

*With fiber laser source,it achieves the continues welding.

*long-distance laser welding,Fast welding speed, easy operation.

Suitable for all kinds of complicated welding



Laser head

1, 4-in-1 head

Welding:



Cleaning:



Weld seams cleaning:



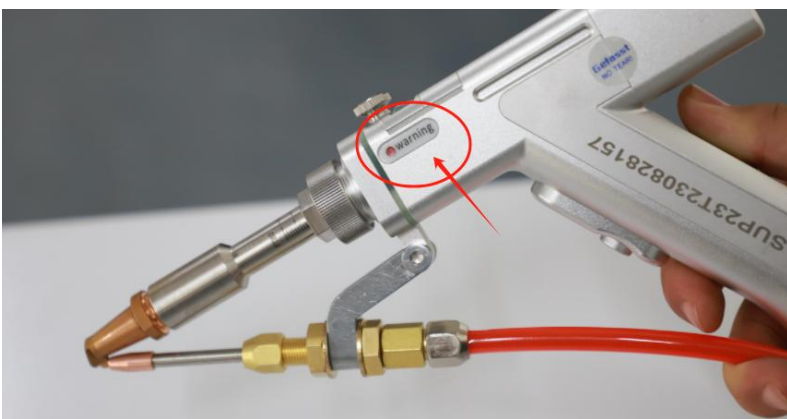
Cutting:



When you need to cut,you just need to change to cutting nozzle;

When you need to clean,you can remove the welding nozzles;(If you wanna get a bigger cleaning width,you can also change a bigger focus lens)

2, Temperature protection



You can set the lens temperature on software panel.

When it is over the set temperature,the light color will become red color from green.

So you can check to replace lens easily at this time.

Auto Wire Feeder



*sometimes **the welding gap is big**,so they need to add the wire feeder.

*sometimes you want a **stronger welding strength**,so u can add wire feeder.

You can close the feeder function when you do not need it.

1,It can feed 0.8mm, 1.0mm, 1.2mm,1.6mm wire.

The wire material should be same as your welding material.You can buy the wire roller locally.

2,**2-wires feeding system for 3kw:**

2-wires feeding system is optimal if you need for 2kw and 3kw.

You can put **2 wire rollers** with **different wire material** on one wire feeder.

Such as you need to weld stainless sometimes,and aluminum sometimes.

You don't need to change wire roller which can save a lot of time.

You can also put **2 wire rollers** with **same wire material** one one wire feeder.

Auto-wire feeder can feed 2 wires at the same time,so **wobble width can be wider**, up to 8mm.

Especially when metal gap is big,like 2mm, it can help a lot.



Water chiller



Water chiller inside the cabinet of handheld laser welding machine

The integrated water cooler is more efficient for the welding head and laser cooling.

It is our entire welding machine with faster welding speed and better welding effect.

The integrated water cooling design also saves the layout space and freight cost for the customer. Input and output controlled by button, water input will stop automatically when water is full.

Wheels



With these wheels, it is easy to move the machine.

Consumption

1) Total power Consumption: 5.5kw/7kw/9.5kw/13.3kw

2) Consumable: protective lens and nozzle.

***Protective lens:** need to change it about per 4-7 days.

***Nozzle:** You can change it when the nozzle tip is not round.

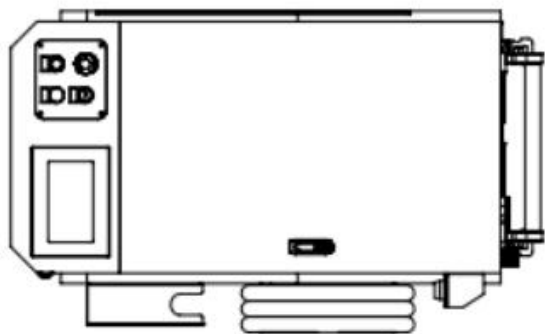
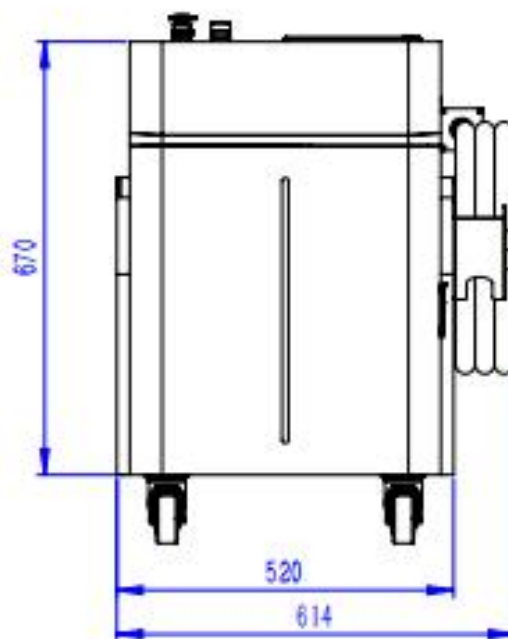
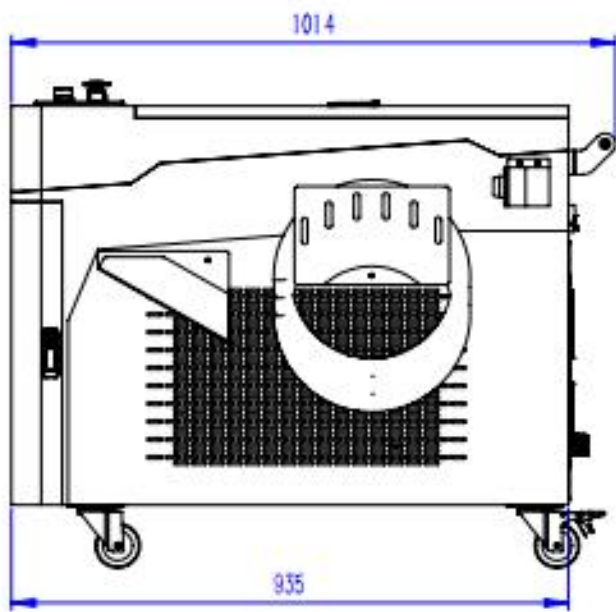
3)Gas Consumption:

Nitrogen or Argon gas 10L/hour

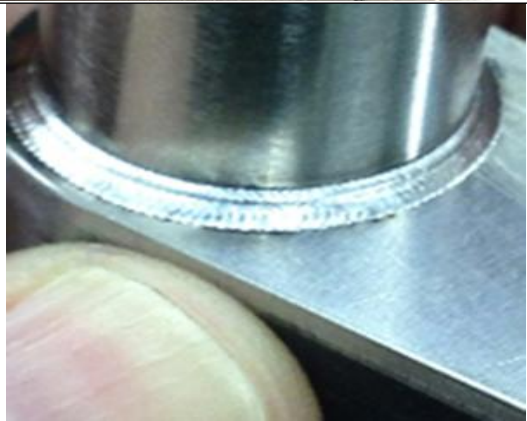
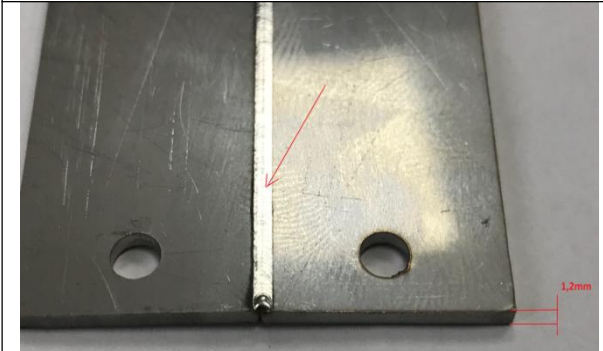
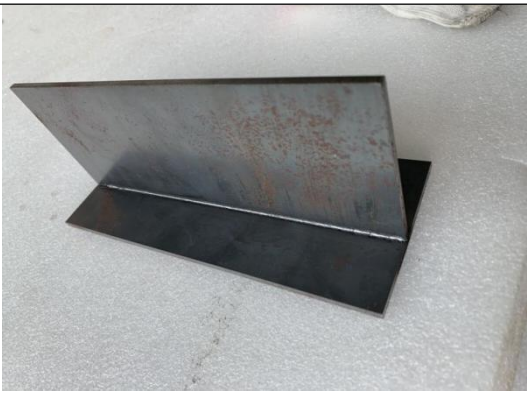
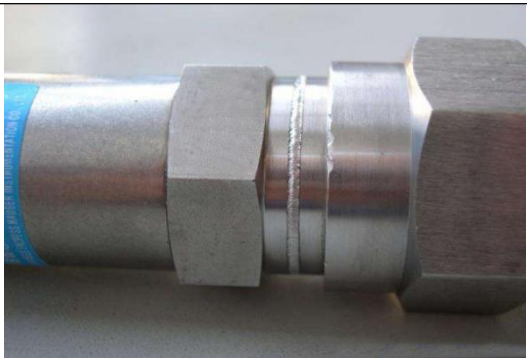
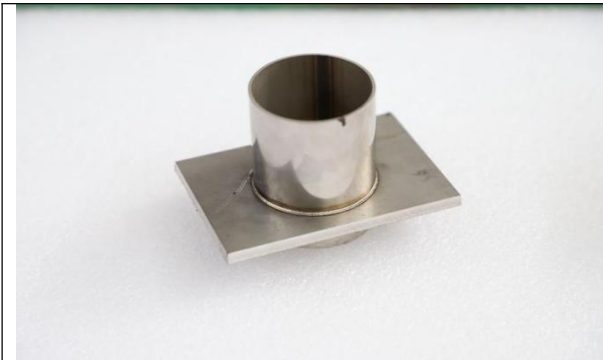
For material that is easy to be oxidized,Argon is better.

For usual material,there is no big difference in the welding effect.

welding Machine Footprint



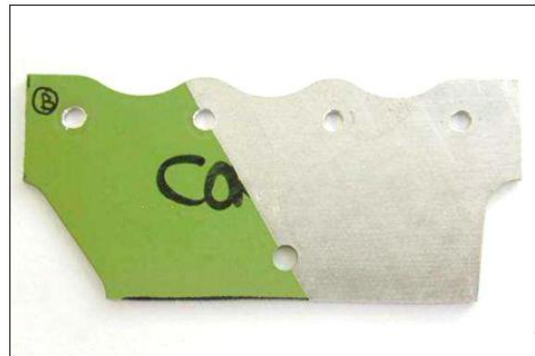
Welding Samples



Cleaning Samples



Oil removal



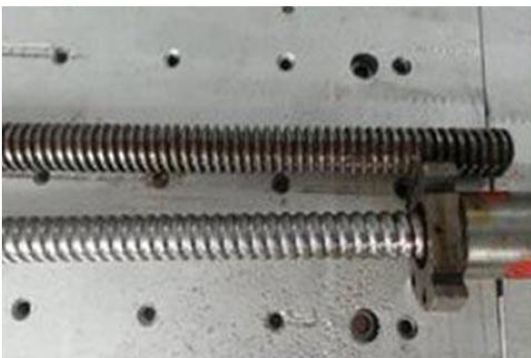
Paint removal



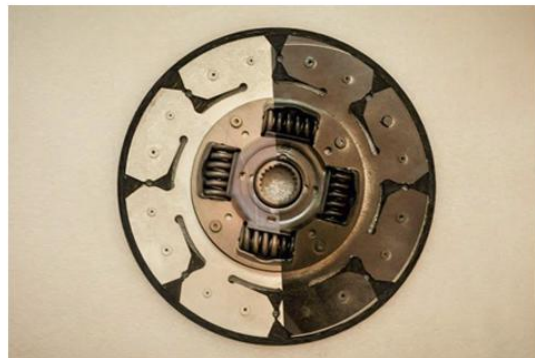
Tire mold cleaning



Oxide layer removal



Screw laser cleaning



Laser derusting

Work Shop



About Us

Jinan Xintian Technology Co., Ltd. (XT LASER) was established in 2004. The company is committed to the R & D, production and sales of laser industrial equipment such as laser cutting machine, laser marking machine, laser welding machine, laser cleaning machine, glass cutting machine and supporting automation system. It is a professional customized laser industrial application solution provider. Perfect product quality monitoring and after-sales guarantee system ensures the high-end quality and professional service of products.

Jinan Xintian Technology Co., LTD.

Contact: Jill Lan

Mob/whatsapp:+86-18753172067

Email : xintian143@xtlaser.com

Address: Chunbo Laser Technology Industrial Park, Kechuang Road, Licheng District ,Jinan City, Shandong Province