



# SLT 152-FIBER

5 Axis Fiber Laser  
Cutting Line  
For Tubes and  
Profiles

SOCO's introduces its newest generation in tubes and profiles processing technology – the Fiber Laser Cutting System "SLT-152-FIBER". With over 30 years of experience in design and manufacturing experience in tube cutting technology, SOCO is specialized in solutions for the Tube and Pipe industries, and the new Fiber Laser Cutting Line is the ultimate solution for joining multiple machining processes in one system for maximum flexibility, automation and performance.

**SLT-152-FIBER Automation Working Processes:**

1. Automatic Tube Bundle Loading
2. Automatic Material Alignment
3. Automatic Feeding and Rotation
4. Fiber Laser Cutting
5. Unloading

**Complete Solution for Tube and Pipe**

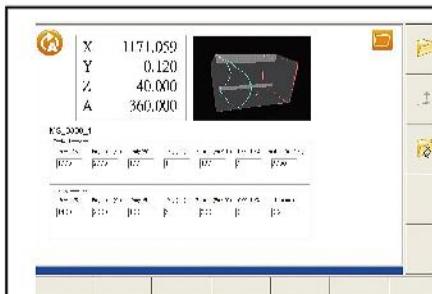


**Machine Standard Features: Capacity up to O.D. 152 mm**

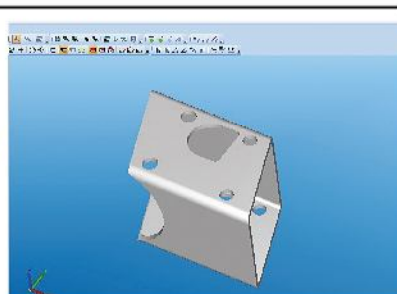
- Cutting Lengths up to 2000mm or 3000mm (longer lengths by request)
- Wall thickness from 0.6 - 6.0mm (Mild Steel)
- Automatic Bundle Loading System with Material Alignment
- Automatic Unloading System with Conveyor
- Equipped with 1.0 kW (Standard) or 2.0 kW (Optional) Laser Resonator
- Multi-Axis CNC Controls with Touch Screen Interface
- SOCO CAD-CAM system for Tubes and Profiles with built-in Nesting
- SOCO i2 ( Intelligent interface) 3D operation software
- Cutting for round, square, rectangle and various profile shapes
- Enclosed Workstation for maximum safety
- Automatic Distance Control
- Laser Resonator Cooling and Fume extraction systems

**Suitable for ( mm ):**

- Round Tube: O.D.20 - 152
- Square Tube: 20 x 20 – 120 x 120
- Rectangular Tube: 20 x 20 and Max.O.D.150
- Oval Tubes
- L-shaped and C-shaped profiles
- Mild Steel, Stainless Steel and Aluminum materials



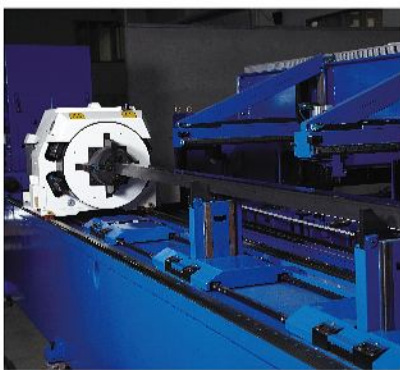
SOCO 3D Operation Software



SOCO CAD-CAM system

# SLT 152-FIBER

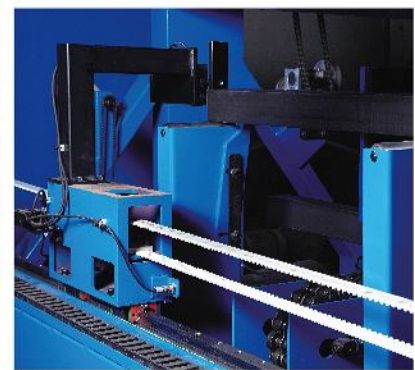
5 Axis Fiber Laser Cutting Line  
For Tubes and Profiles



Automatic Feeding and Rotation



Automatic Bundle Loading Magazine



Automatic Material Alignment



**SOCO MACHINERY CO., LTD.**

NO.3, JINGKE E. RD., NANTUN DIST., TAICHUNG CITY  
40852, TAIWAN  
TEL : 886-4-23591888  
FAX : 886-4-23592386  
E-MAIL : sales@soco.com.tw

[www.soco.com.tw](http://www.soco.com.tw)



130228/01E