



Complete
Solution for
Tube and Pipe

FA SERIES

**NC Servo Hydraulic
Circular Sawing Machine
20mm Shortest Crop Length
(NC-SN Line)**



AC line / Air Lifting System for Angle Cut Setting

DR line / Digital Screen Displaying Feeding Length & Error Display on Control Panel

NC line / NC Servo Controlled Feeding + Touch Screen

FA series

NC Servo Hydraulic Circular Sawing Machine 20mm Shortest Crop Length (NC-SN Line)

Machine Features:

AC Line:

- Semi-automatic operation
- Straight and angle cutting
- Air lifting system for angle cut setting
- Roller Type Material Input Stand (Optional)
- Roller Type Material Output Stand and adjustable length gauge and stopper (Optional)

DR Line:

- Digital counter for automatic operation
(Cutting length / Quantity set up / Counter)
- Display of Movements on Control Panel for Easy troubleshooting
- Standard with Speed Inverter for speeds of 22 ~ 108 RPM
- Fully automatic hydraulic system
- Feeding lengths up to 3 strokes X 1000 mm
- Patented Gearbox for both Heavy and Light Cutting of Tubes and Bars
- Vertical sliding saw head ensures stable and precise cutting
- Backlash eliminating device prolongs the life of saw blade
- Counter Balance System for maximum stability through the entire cut
- Patented floating feeding carriage for superior cutting length accuracy and smooth material handling
- Rigid Clamping vise provides secure material holding
- Automatic lubrication system maintains good work performance
- Circulating cooling system results in smooth cutting surfaces and longer blade life
- Electronic saw blade protection cover for safety operation
- Built-in chips tray for convenient cleaning and maintenance

NC and NC-SN Lines Savings

- 20mm (V type Clamping Jaw) – The Shortest Crop Length of any machine available in the market (SOCO Global Patent - SN Models)
- With the shortest crop lengths, the FA-111NC-SN / 127NC-SN models bring maximum material savings and more production

Performance

- Vertical Slide for maximum cutting power and rigidity
- Standard with Speed Inverter for speeds of 22 ~ 108RPM
- Electric Servo Feeding for +/- 0.05 ~ 0.1mm Cutting Length precision (per stroke)
- Capacity up to 127mm in Tube and 100mm in Solid Bars
- Superior Gear Box design for maximum machine life and performance
- Flexible Gripper Feeding + Floating Carriage allow for maximum feeding precision even in material which is not perfectly straight
- Cutting Examples
 - O.D. 50mm solid bar, L = 150mm, cycle time is 28sec
 - O.D. 75mm steel tube, L = 139mm, cycle time is 11.5sec

Software

- Intuitive and User Friendly Interface with Touch Screen system
- Ability to program multiple cutting lengths per bar
- Large file storage system
- Safety Covers (optional) for maximum operator protection and comfort
- Ability to use Flat and Bundle clamps for multiple tubes cutting

■ HVS-375AC / HVS-400AC

Air Lifting System for Angle Cut Setting



■ FA-111DR / FA-127DR

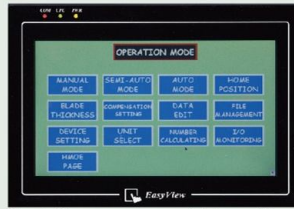
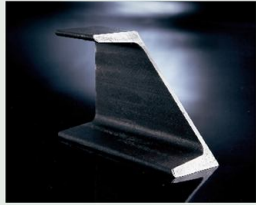
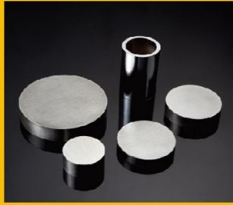
Digital Display of Feeding Length and Programmable Counter
Control Panel with Movements' Display for Easy troubleshooting



■ FA-111NC / FA-111NC-SN / FA-127NC / FA-127NC-SN

NC Servo Controlled Feeding + Touch Screen
Global Patent, Shortest Crop Length – 20mm (SN Type)

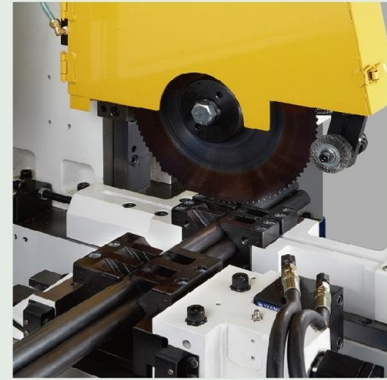




Touch Screen system with large file storage system (NC Line)



Digital Screen Displaying Feeding Length & Error Display on Control Panel (DR Line)



V-type clamping jaws for multiple tubes and bars

Cutting Capacity (Mild Steel) (mm)

Model	HVS-375AC		HVS-400AC		FA-111DR	FA-111NC	FA-127DR	FA-127NC
Cutting Angle	90°	45°	90°	45°	90°	90°	90°	90°
○ Round Tube	∅110	∅110	∅125	∅125	∅114	∅114	∅127	∅127
□ Square Tube	110 x 110	95 x 95	125 x 125	100 x 100	110 x 110	110 x 110	115 x 115	115 x 115
● Solid Round Bar	∅75	∅55	∅100	∅70	∅75	∅75	∅90	∅90
■ Solid Square Bar	70 x 70	50 x 50	90 x 90	75 x 75	70 x 70	70 x 70	90 x 90	90 x 90
⊠ Multiple Tubes / Bars	Optional V-type clamping jaws. Maximum 9 pieces cutting capacity (Depend on the tubes size)							

Specifications

Model	HVS-375AC		HVS-400AC		FA-111DR	FA-111NC	FA-127DR	FA-127NC
Type	A	B	A	B				
Main Motor (HP / Pole)	3/6	2/8	5/3 , 2/4	5/4 , 2/6	5/4		5/4	
Arbor RPM (60Hz)	72/32	55/22	44/22	22/16	22 ~ 108 (Spindle Speed with Inverter)		11 ~ 44 (Spindle Speed with Inverter)	
HSS Saw Blade Size (mm)	∅250 ~ ∅370		∅250 ~ ∅400		∅250 ~ ∅370		∅250 ~ ∅400	
TCT Saw Blade (+)	HSS - Arbor Hole ∅32. Pin Hole 2 x ∅11 x 63 PCD ∅285 ~ ∅360 - By Request (+)							
Feeding Length (mm) (*)	-				<ul style="list-style-type: none"> - DR Type (Standard): 10~600 x 1~3 times (Max. length is 1800) - DR Type (Extended): 10~1000 x 1~3 times (Max. length is 3000) - NC / NC-SN Type (Standard): 10~550 x Unlimited Times - NC / NC-SN Type (Extended): 10~950 x Unlimited Times 			
Crop Length (mm)	-				60 + α (NC Line) 20 + α (NC-SN Line) α = Cutting Length			
Hydraulic System	2HP-4P Pump, Working Pressure 25 ~ 35kg/cm ²				2HP-4P Pump, Working Pressure 35kg/cm ²		3HP-4P Pump, Working Pressure 45kg/cm ²	
Cooling System	0.125HP, Water Pump, Automatic Coolant Circulation				1/2HP, Water Pump, Automatic Coolant Circulation		1/4HP, Water Pump, Automatic Coolant Circulation	
Total Power (KW)	4.0KW (Motor 3HP) 3.2KW (Motor 2HP)		5.4KW		6.4KW	9KW	6.4KW	9KW
Weight (Kg)	400		460		1565 (Standard) 1650 (Extended)	1600 (Standard) 1700 (Extended)	1650 (Standard) 1750 (Extended)	1700 (Standard) 1800 (Extended)
Dimension (mm) (L x W x H)	700 x 1500 x 1750 (Standard)				<ul style="list-style-type: none"> - DR Type (Standard) : 2310 x 1100 x 1850 - NC Type (Standard) : 2200 x 1200 x 1900 - DR Type (Extended) : 3050 x 1100 x 1850 - NC type (Extended) : 2600 x 1200 x 1900 			

Due to continuous improvements and designs : the manufacturer reserves the right to modify or make any change of all models without notice.

(*) For Cutting Lengths over 500 mm, it is recommended to add an Output Table (RTO)

(+) To use TCT Saw Blades, SOCO will recommend the appropriate blade based on cutting requirements and material properties.



SOCO MACHINERY CO., LTD.

NO.3, JINGKE E. RD., NANTUN DIST.,
TAICHUNG CITY 40852, TAIWAN
TEL : 886-4-23591888
FAX : 886-4-23592386
E-MAIL : sales@soco.com.tw

www.soco.com.tw